

Getting Help from Wildlife Organizations

Please email us if you have better information than what is listed here. Thanks!
oldjamestownassociation@gmail.com

Animal	Organization	Details
Songbirds	<p>Wild Bird Rehabilitation 9624 Midland Blvd. St. Louis, Missouri 63114 314-426-6400</p> <p>WBR is located in Overland, on Midland Blvd. between Ashby and Woodson.</p> <p>Open Daily 8 am – 7 pm</p> <p>http://wildbirdrehab.org/help-ifoundabird</p>	<p>Contact us to discuss your specific situation: 314-426-6400</p> <p>What to do if you find a bird</p> <p>This information is to help you identify the problem, not necessarily resolve it. It is always our goal to avoid separating a bird from its family and/or native habitat. But in some cases, this cannot be avoided. If the bird is sick or injured (such as bleeding, broken wing, etc.) it will always be necessary to bring the bird to Wild Bird Rehabilitation for treatment.</p> <p>If you need to transport a bird to our clinic: A shoe box with air holes in the lid and lined with a small paper towel works for most songbirds Do not give the bird food or water Handle the bird as little as possible WBR does not pick-up, patrol or dispatch volunteers or staff to locations.</p> <p>What to do if you find a...</p> <p>BABY BIRD: Wild birds live among us in our gardens and parks. Sometimes they need our help and sometimes they don't. How do you tell? (see image below)</p>

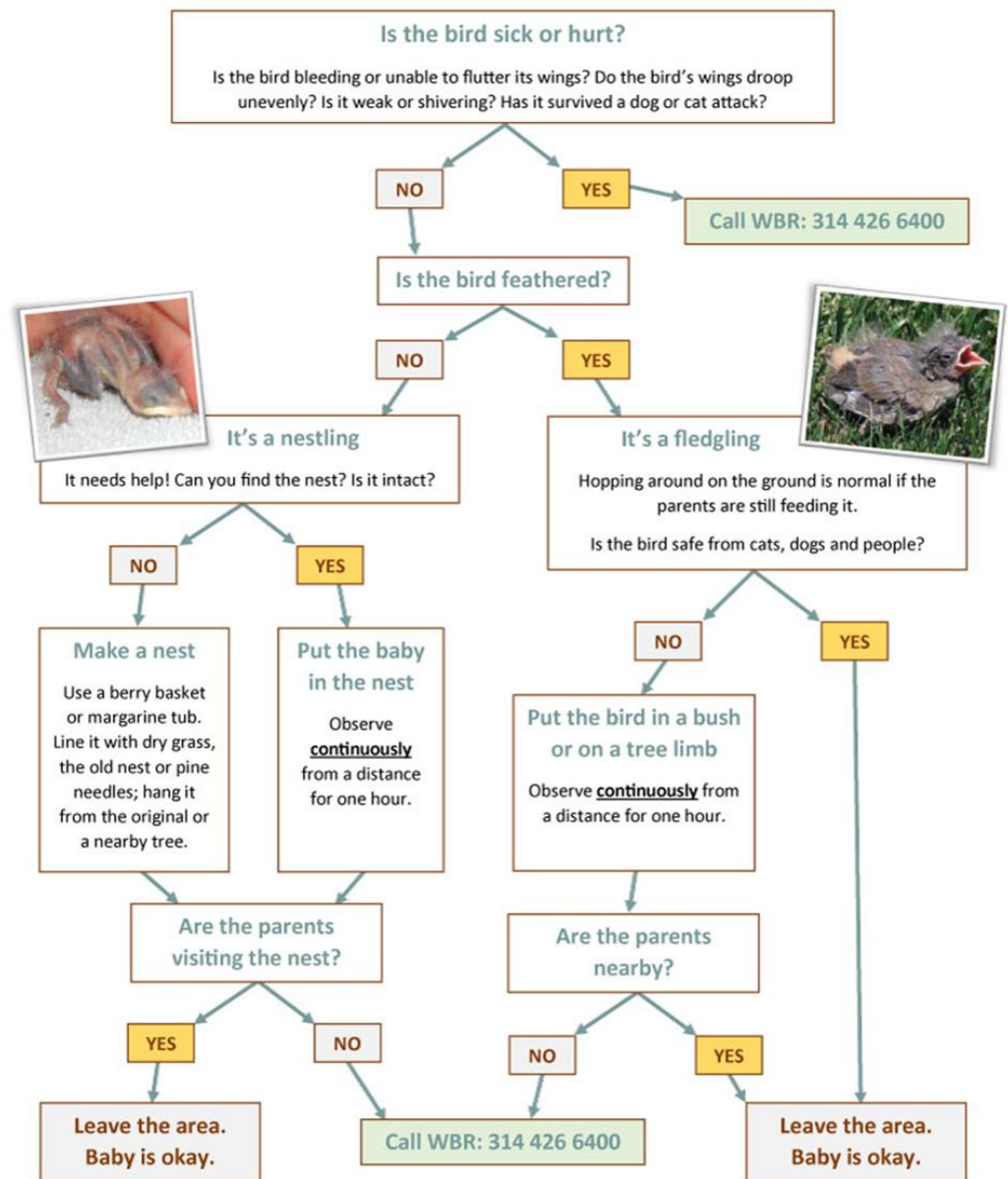


Image from https://images.squarespace-cdn.com/content/v1/54abfbd7e4b010b9ae3c8a5b/1428074227814-82QNVXL7G13P034WGA13/NEW_FoundBabyBird.jpg?format=1000w

BIRD TANGLED: If the bird is caught in something such as twine or string or some type of garden mesh that restricts its ability to move and fly, have someone assist you while you free the bird. Please call us to discuss the next steps.

ADULT BIRD with WING INJURY: If bird allows you to catch it and does not attempt to fly away, place the bird in a small box with a lid or a brown paper bag that can be fastened at the top. Line with paper towels. Please call us to discuss the next steps.

BIRD COATED in OIL, GLUE or OTHER STICKY SUBSTANCE: Use a small amount of corn meal to neutralize the sticky surface and to help avoid further injury. Please call us to discuss the next steps.

BIRD EGG: If the egg was knocked out of a nest by wind:
If you are able to locate the nest, gently replace the egg
If you are unable to locate the nest, place the egg under a small shrub or bush
Do not try to incubate. It is against the law.

BIRD CAUGHT in your HOUSE:
Lock all pets away
Darken room by closing blinds, shades and doors
Leave open one exit -- large, bright and sunny -- for the bird to safely fly out
If the above attempts are unsuccessful, call WBR at 314-426-6400 to get contact information for humane licensed wildlife control companies.

OTHER GENERAL BIRD NEEDS: Please call us to discuss the following:
If a feathered bird allows you to pick it up
If a bird is fluffed and lethargic
If a bird flies a short distance and falls to the ground

Note: Their cost to rehabilitate an injured bird is around \$70. They would greatly appreciate a donation of any amount if you take a bird to their center.

<p>Birds of Prey (Raptors)</p> <p>Hawks, eagles, owls, falcons, osprey, and kites</p>	<p>World Bird Sanctuary 125 Bald Eagle Ridge Road Valley Park, MO 63088</p> <p>314-337-8889</p> <p>Open Daily 8 am – 5 pm</p> <p>https://www.worldbirdsantuary.org/</p>	<p>Our hospital is only permitted and equipped to take in raptors. This includes hawks, eagles, owls, falcons, osprey, and kites. If you think you have an injured raptor, call us at 314-337-8889.</p>
<p>Wildlife (not adult deer)</p>	<p>Missouri Wildlife Rescue Center 1128 New Ballwin Road Ballwin, MO 63021 Phone: (636) 394-1880 Fax: (636) 394-8143</p> <p>https://www.mowildlife.org/</p> <p>The Wildlife Rescue Center accepts wildlife patients by appointment. Please call 636-394-1880 ext. 201 to arrange an animal admission.</p> <p>OFFICE HOURS Administrative Office: Monday-Friday 9 am - 5 pm</p> <p>ANIMAL CARE SEASONAL HOURS April through October: Monday-Sunday 9 am - 7 pm November through March: Monday - Friday 9 am - 5 pm Saturday & Sunday 9 am - 3 pm</p>	<p>The Wildlife Rescue Center is permitted by the Missouri Department of Conservation and the U.S. Fish and Wildlife Service to treat sick and/or injured native Missouri mammals (except deer), reptiles, amphibians, water birds*, and game birds* for rehabilitation and release to the wild.</p> <p>Wild mammals such as opossums, rabbits, squirrels, etc. Wild reptiles such as turtles, lizards, and snakes Wild amphibians such as frogs, toads, and salamanders</p> <p><u>*Wild Birds We Can Treat:</u> The Wildlife Rescue Center treats wild water birds such as ducks, geese, and pelicans, as well as wild game birds such as turkey and quail.</p> <p><u>Wild Birds We Cannot Treat:</u> Small wild birds such as songbirds (eg. robins, doves, finches, etc.) are treated by Wild Bird Rehabilitation in St. Louis, MO (Overland). Birds of prey (eg. hawks, owls, eagles) are treated by World Bird Sanctuary in Valley Park, MO. Please contact these organizations directly if you have a wild bird in need of their care.</p> <p>Small birds (songbirds): WildBirdRehab.org 314-426-6400 Birds of prey (raptors): WorldBirdSanctuary.org 314-337-8889</p> <p>To find additional help for wildlife or for help outside of the St. Louis, MO region you may visit Animal Help Now at ahnow.org for a list of local permitted rehabbers.</p>

<p>FAWNS</p>		<p>In addition to permitting restrictions, the Center may suspend admission of certain species due to capacity limits, especially during the busy baby season (March through September).</p> <p>For domestic animals (including domestic ducks and geese), you may visit the Humane Society of Missouri website at HSMO.org for information.</p> <p>HELP, I FOUND A WILD ANIMAL! If you already have a wild animal contained, keep it warm and dry in a quiet place away from people and pets. Please DO NOT offer food or water. Doing so most often causes more harm due to dietary sensitivities of wildlife and/or improper feeding technique. Contact the Wildlife Rescue Center at (636) 394-1880 or animalcare@mowildlife.org if you have found a wild animal that:</p> <ul style="list-style-type: none"> Has obvious injuries or illness including wounds, bleeding, broken bones, or discharge from eyes or nose Has been in the mouth of a dog or cat Has flies swarming around it, fly eggs (look like tiny grains of rice in fur, on skin, or in clumps) or maggots on its body. <p>IMPORTANT: Finding a young animal alone does not necessarily mean it needs "help" from a human. Wild babies are sometimes left alone while their parent(s) look for food. Many wild babies are accidentally "kidnapped" every year by people with the best intentions. It is so common that wildlife rehabilitators have a code for it: "abduction with intent to rescue." If the young animal has no apparent injuries, returning it to its parent(s) is the best course of action. Although it is best to avoid or minimize disturbances, wild parents can be surprisingly tolerant when it comes to taking care of their babies. Wild parents will NOT automatically "abandon" their young if they've been moved or touched by humans. A young wild animal's best chance for survival is with its parent(s).</p> <p><u>FAWNS</u> A mother doe leaves her fawn alone for up to 22 hours a day while she goes to forage. The fawn has virtually no scent and can lay motionless for many hours. This defense technique is very effective against natural predators. It is not uncommon to see a fawn curled up quietly in a residential yard, on the roadside or even on your front porch.</p>
--------------	--	---

		<p>If a fawn is found: <u>PLEASE LEAVE IT ALONE.</u> Keep the area as quiet as possible, free of people and pets. If the fawn has already been removed from the wild, it should be returned to where it was found where the mother doe is almost certainly waiting. The returned fawn should be placed as close as possible to the original location and left alone. The doe will return when she feels it is safe to do so.</p> <p>Contact the Wildlife Rescue Center at (636) 394-1880 for instruction on any situation not covered by the preceding information.</p>
Wildlife	<p>Bi-State Wildlife Hotline number is (855) WILD-HELP.</p> <p>https://www.wildlifehotline.com/</p>	<p>From Creve Coeur, Missouri's police website:</p> <p>The Bi-State Wildlife Hotline is a not-for-profit wildlife rescue, rehab and resource assembled by a group of wildlife rehabilitators across Missouri and Illinois. Their mission is to provide the public with 24 hour easy access to wildlife information and resources. They do this by offering wildlife coexistence education, humane conflict resolution advice, wildlife rescue services, and referral to local wildlife resources when needed. The Bi-State Wildlife Hotline number is (855) WILD-HELP.</p>
Animal Bites	<p>St. Louis County Animal and Mosquito Control Services 10521 Baur Boulevard Olivette, MO 63132 (314) 615-0650</p> <p>animals.dph@stlouiscountymo.gov</p> <p>https://stlouiscountymo.gov/st-louis-county-departments/public-health/animal-care-control/</p> <p>Mon - Fri: 10 am – 6 pm</p>	<p>From Creve Coeur, Missouri's police website:</p> <p>The St. Louis County Animal and Mosquito Control Services assures that pets and people live together in safety and harmony, and that all pets receive proper care and housing. As part of your Health Department, Animal Control officers are in action every day, handling many routine as well as emergency situations with pets and wild animals. One of the most important things that Animal Control officers do is investigate animal bites. The St. Louis County Animal and Mosquito Control Services is located at 10521 Baur Boulevard in Olivette, MO. If you have any questions about this organization, they can be reached at (314) 615-0650.</p> <p>From St. Louis County Animal Care & Control:</p>

<p>Dead Animals</p>	<p>Sat, Sun: 10 am – 4 pm</p> <p>Non-emergency after hours phone line: (636) 529-8210</p>	<p>We strive to protect the health and welfare of people and animals in St Louis County. This is accomplished by controlling populations of stray and feral animals, enforcing County ordinances, and providing exemplary care for animals housed at the shelter. We are a public resource, guiding and protecting people and animals to live in a safe, healthy, and humane community.</p> <p>[But] St Louis Animal Care & Control <u>does not</u> pick up dead animals. If the deceased animal is on a <u>county street</u>, please contact St Louis County Transportation and Public Works https://stlouiscountymo.gov/st-louis-county-departments/transportation-and-public-works/ Hearing Impaired Ph: RelayMO 711 General Information Transportation General Information 314-615-8504 Public Works General Information 314-615-5184 Transportation Operations Requests for Roadway Service Ph: 314-615-8538 email: h2@stlouiscountymo.gov <i>(Note: this website has quite a lot of good information about the county)</i></p> <p>If the animal is on a <u>state-maintained road</u>, please contact Missouri Department of Transportation (https://www.modot.org/) 888-275-6636</p> <p>If the animal is on <u>private property</u>, you will need to call a carcass removal service. Use a search engine with “dead animal removal st louis county” in the search box.</p>
<p>Sick or Dead Wildlife</p>	<p>Missouri Department of Conservation</p> <p>WildlifeHealth@mdc.mo.gov</p> <p>https://mdc.mo.gov/wildlife/wildlife-health/when-report-sick-or-dead-wildlife</p>	<p>When to Report Sick or Dead Wildlife What do I do if I see a sick or dead animal?</p> <p>Monitoring possible disease outbreaks is critical to protecting the health of wildlife in Missouri. Please report observations of the following: Single deer that appear sick, especially deer that are skinny and acting oddly</p>

	no phone number provided	<p>Three or more sick or dead mammals Five or more sick or dead birds Groups of sick and dead amphibians or reptiles</p> <p>Report any observations of sick or dead wildlife that meet these criteria to WildlifeHealth@mdc.mo.gov</p> <p>For your safety Avoid handling sick or dead wildlife. If you must handle a dead animal, always wear gloves and wash your hands after.</p> <p>Any mammal can carry rabies — be cautious of any mammal that is acting strangely.</p>